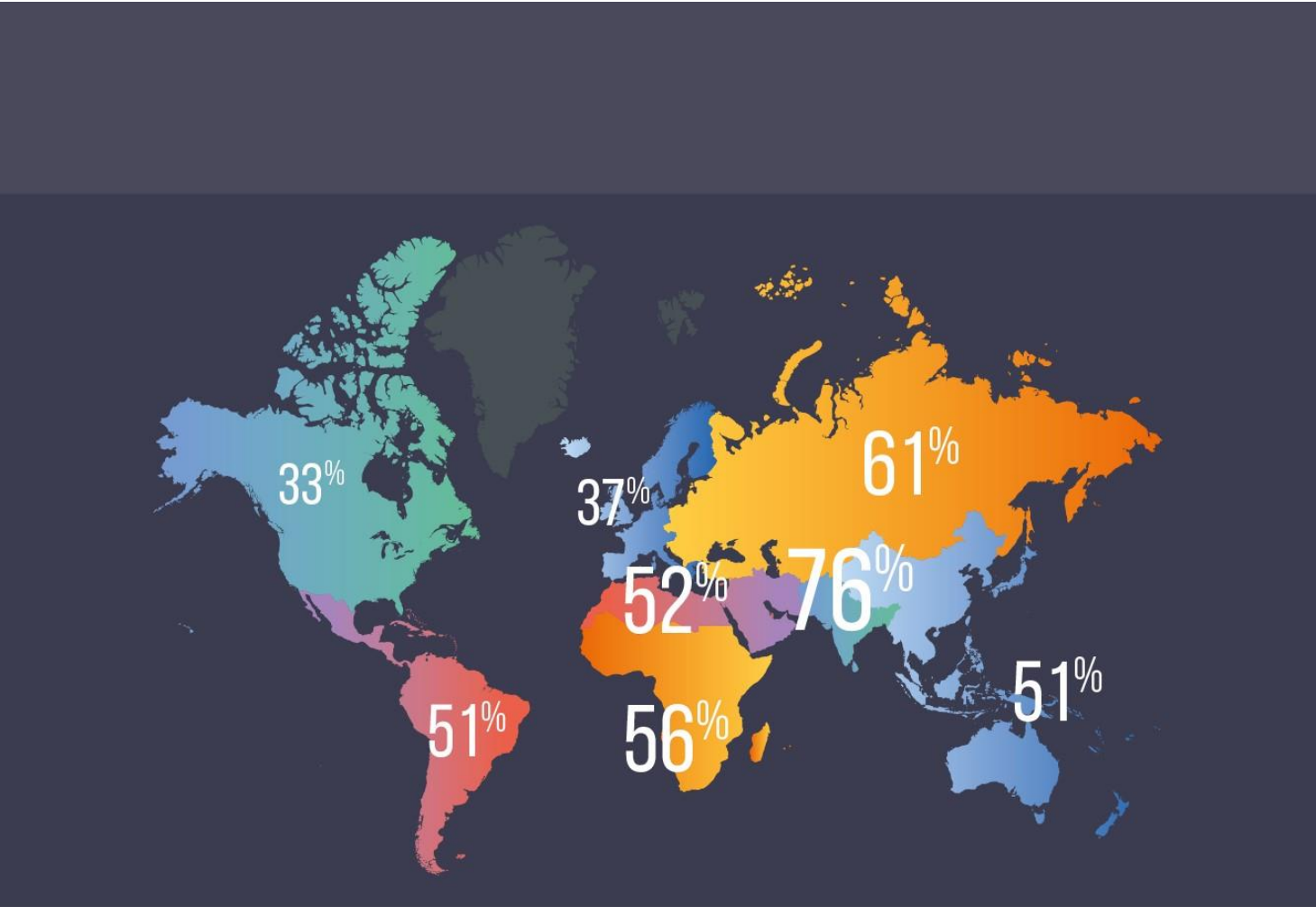
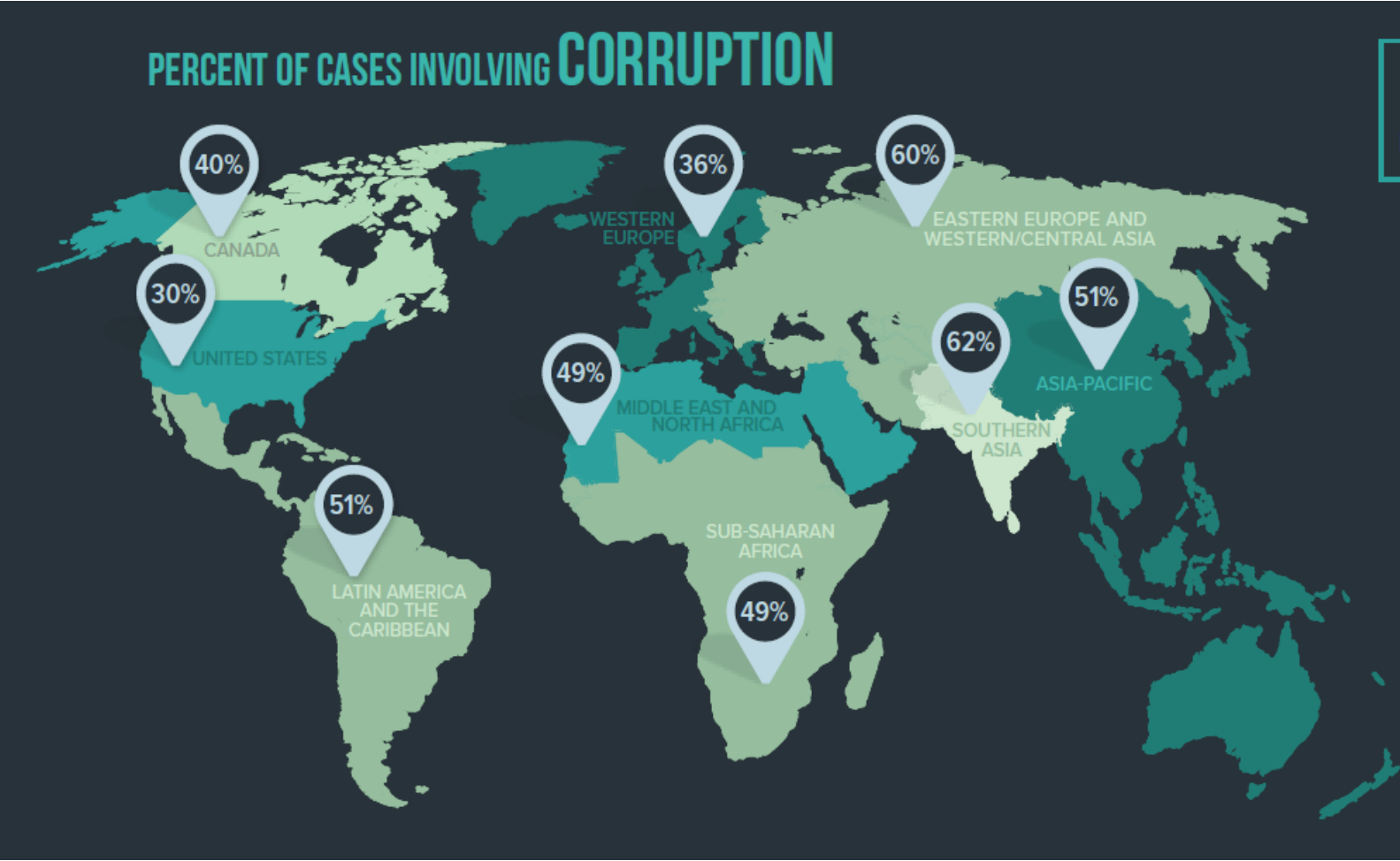


Percentage of cases involving corruption, by region, 2020

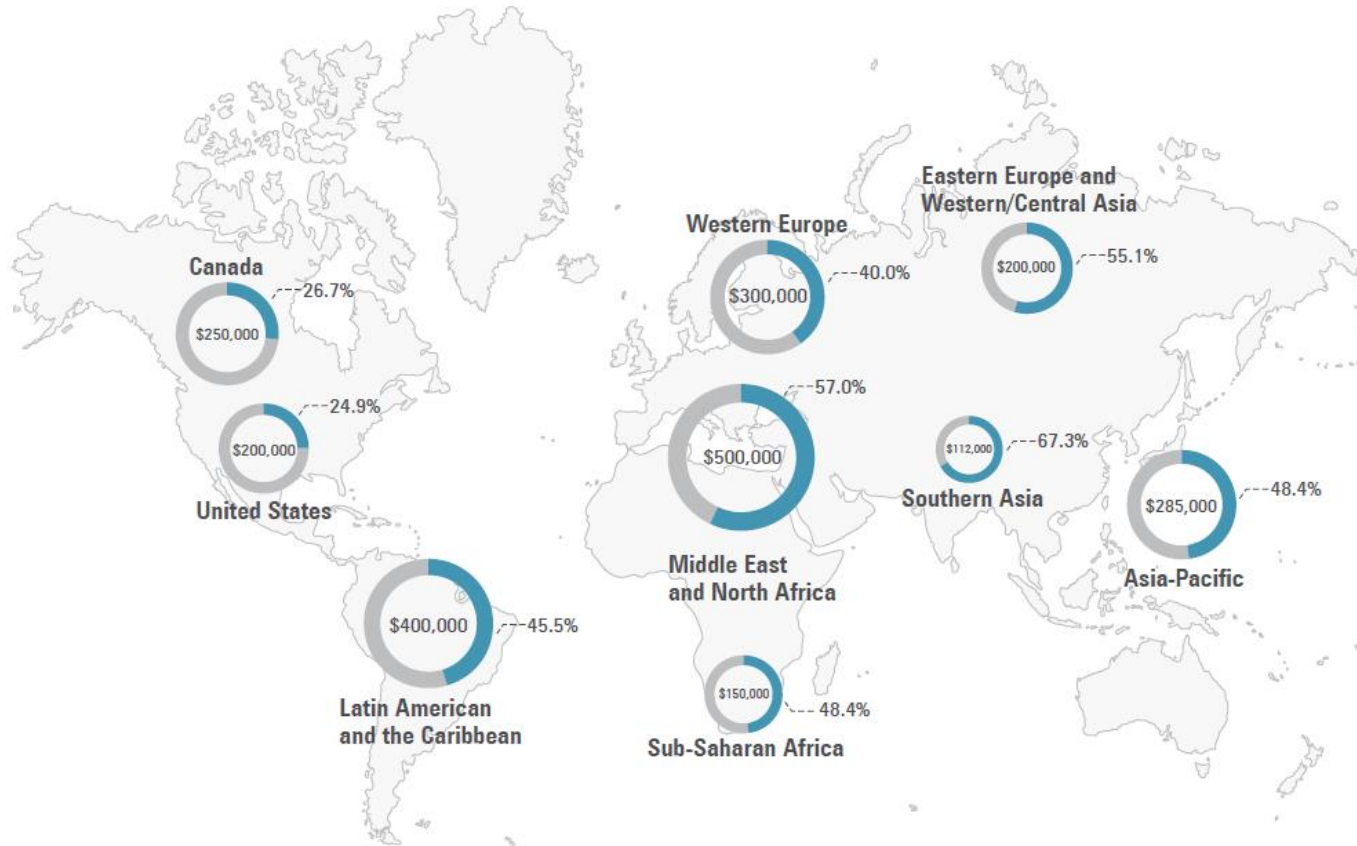


Percentage of cases involving corruption, by region, 2018



Source: RTTN2018, ACFE

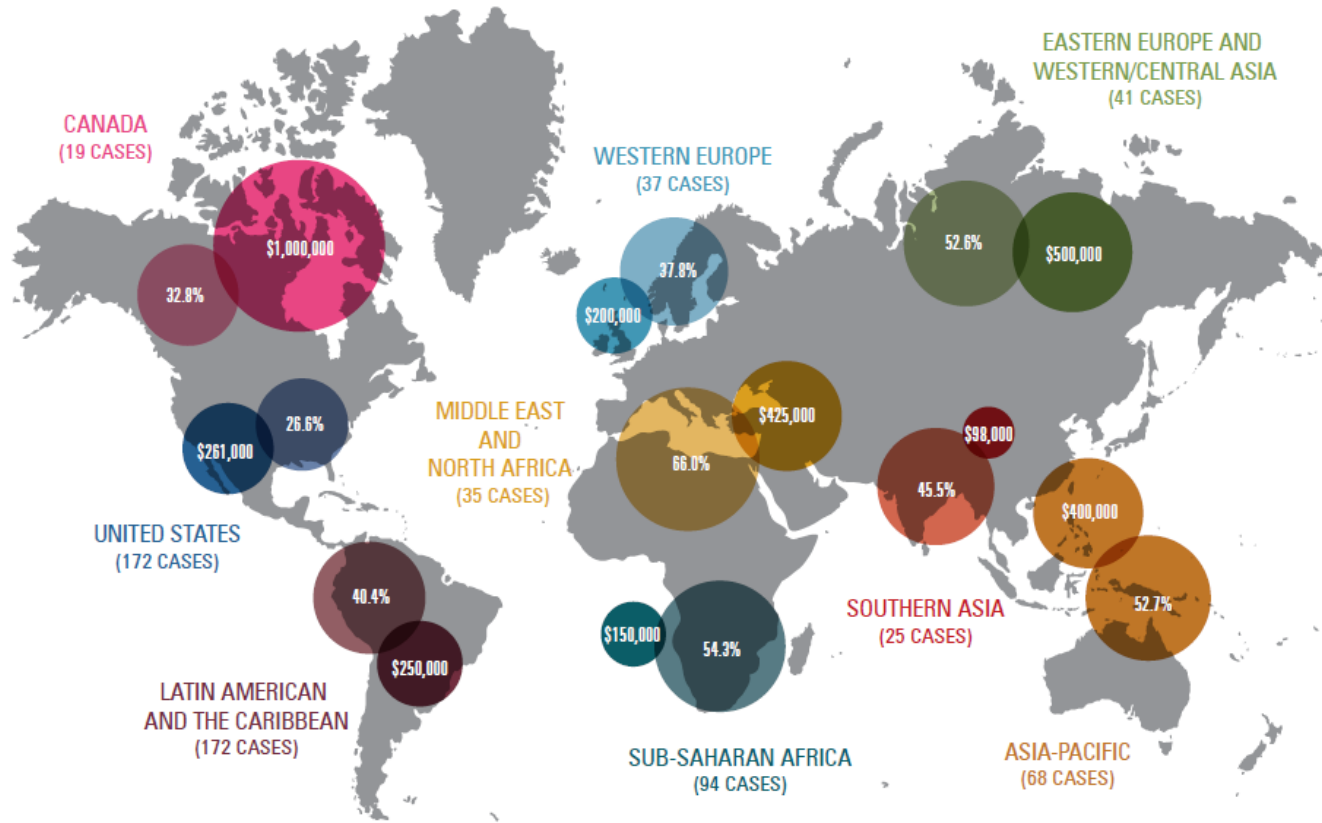
Percentage of cases involving corruption & median loss, by region, 2016



*For each region, the percentage shown indicates the proportion of cases in the region that involved corruption, and the dollar figure represents median loss for the corruption cases in the region.

Source: RTTN2016, ACFE

Percentage of cases involving corruption & median loss, by region, 2014



Source: RTTN2014, ACFE

Percentage of cases involving corruption & median loss, by region, 2012

Corruption Cases by Region			
Region	Number of Corruption Cases	Percent of All Cases in Region	Median Loss
Asia	104	51.0%	\$250,000
Latin America and the Caribbean	18	47.4%	\$300,000
Europe	59	44.0%	\$250,000
Oceania	14	40.0%	\$300,000
Africa	44	39.3%	\$350,000
Canada	17	29.3%	\$200,000
United States	195	25.1%	\$239,000

Source: RTTN2012, ACFE



**12/14, Rond-Point des Champs-Élysées, 75008 Paris,
France**

www.ifpf.fr

contact@ifpf.fr

Tel: +33 (0)1 53 53 15 63

Mob: +33 (0)6 32 36 50 59